

Annex O (Emergency Animal Care) to the Morgan County Emergency Operations Plan

Purpose

Coordinate public and private sector resources to meet the animal service needs that may arise during an emergency including:

- ❖ Rescue and capture animals that have escaped confinement
- ❖ Evacuation / transportation
- ❖ Sheltering
- ❖ Medical care for the sick and injured
- ❖ Quarantine of infectious or contaminated animals
- ❖ Disposal of dead animals

The primary focus of this annex is for the care of companion animals. Additions may be added to address other than companion animals.

Response workers activated by this plan will be registered and sworn volunteers of the Morgan County Emergency Management Agency and Office of Homeland Security, and as such, will have statutory protection under:

Ohio Revised Code Section 5502 Immunity from liability
Ohio Revised Code Section 4123.031 – 4123.037 Worker's Compensation

HAZARD ANALYSIS

Pet Population Estimates

Based on the American Veterinary Medical Association's 1992 studies, the following are the estimated number of pets per household.

	% of households owning a pet	Number of pets per household
Dogs	36.5	1.52
Cats	30.9	1.95
Birds	5.7	2.16

2000 census figures indicate Morgan County has a population of 14,897. Based on these numbers the estimated pet population figures for Morgan County are:

Dogs	5,437.4
Cats	4,603.2
Birds	849

There are also an undetermined number of exotics and pocket pets. Larger and/or farm animals are not included in these figures. They, also, may need rescued.

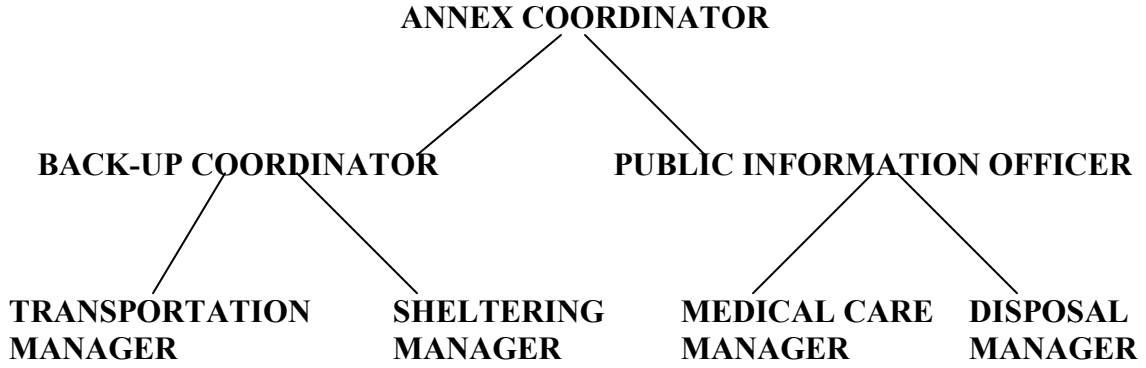
Possible Hazards

The Hazard Analysis for Morgan County identifies flooding, tornadoes, severe winter weather, and hazardous material spills, as the four hazards posing the greatest threat to the county. All four could create the need to evacuate people from their homes, which would also displace companion animals. These hazards could also cause injury or death to animals and allow animals to roam unattended.

It is not expected that any of these hazards would affect the entire county. According to the Hazard Analysis for Morgan County flooding could affect multi-communities in the county. Tornadoes and hazardous material spills could also affect more than one community but would not be as wide spread as flooding; severe winter storms could also affect the entire county. The duration of these hazards is variable. Anyone of them could cause the separation of animals from their owners for several days, perhaps weeks. Secondary events, such as power outages, could prolong the situation. Smaller scale events, such as a fire or animal transport accident could require emergency animal care.

EMERGENCY ANIMAL CARE

MORGAN COUNTY EMERGENCY OPERATIONS PLAN



Plan Activation:

- ❖ Receive and act on request for assistance
- ❖ Primary responsibility – MCEMA

Public Information:

- ❖ Obtain information for dissemination to the public on protective actions to be taken for companion animals.
- ❖ Primary responsibility – MCEMA
- ❖ Support responsibility – MC Humane Society

Transportation:

- ❖ Rescue, capture, and transport of animals to shelter or medical facility
- ❖ Primary responsibility – MC Humane Society and MC Dog Warden
- ❖ Support responsibility – MC Health Department

Emergency Medical Care:

- ❖ Treatment of severe injury, illness or contamination
- ❖ Primary responsibility – Veterinary Hospitals
- ❖ Support responsibility – Veterinary Community

Non-emergency Medical Care:

- ❖ Treatment of minor injuries
- ❖ Primary responsibility – Veterinary Community
- ❖ Support responsibility – MC Humane Society and MC Dog Warden

Sheltering:

- ❖ Housing and care of animals requiring sheltering only
- ❖ Primary responsibility – MC Animal Rescue and MC Dog Warden
- ❖ Support responsibility – Veterinary Community

Quarantine:

- ❖ Quarantine of infectious and/or contaminated animals
- ❖ Primary responsibility – MC Health Department and Veterinary Community
- ❖ Support responsibility – Ohio Department of Health and MCEMA

Disposal of Dead Animals:

- ❖ Primary responsibility – MC Health Department
- ❖ Support responsibility – Ohio Department of Health and MCEMA

PLAN ACTIVATION PROCEDURE

The Annex will be activated by the Morgan County Emergency Management Agency for Morgan County when one or more of the following occur:

- ❖ An event of a magnitude that requires the shelter and medical care of animals.
- ❖ An evacuation has been ordered
- ❖ A Red Cross shelter is opened
- ❖ Jurisdiction has declared a state of emergency
- ❖ Request from Red Cross during fire emergency

This Annex will be activated upon request from the Emergency Responders.

PLAN ACTIVATION CHECKLIST

EMERGENCY MANAGEMENT AGENCY FOR MORGAN COUNTY

_____ Call Annex Coordinator (if unable to contact coordinator, call back-up coordinator)

_____ Notify the Red Cross that Annex has been activated

_____ Assign Public Information Officer

_____ Notify affected jurisdiction(s) of Annex activation

ANNEX COORDINATOR CHECKLIST

The Annex Coordinator may operate from:

- ❖ An EOC, if one is activated (Emergency Operations Center)
- ❖ Incident Command operations section
- ❖ Facility convenient to management of the event

The Annex Coordinator is responsible for the overall management of the Plan. Any outside assistance, if it becomes necessary, will be arranged for and managed by the Plan Coordinator.

___ Determine from EMA/jurisdiction the size and location of the area affected

___ Make an initial estimate of the numbers and types of animals that may need medical care and/or shelter

___ Identify and coordinate facilities that may be used to house evacuated animals

___ Arrange with Animal Control (dog warden and volunteers of the Humane Society) for transport of animals to shelters and veterinary medical facilities

___ Activate procedures to obtain sufficient personnel to staff animals shelters and hospitals as needed

___ Inform EMA and Red Cross of locations of animal shelters and hospitals that have been opened

___ Initiate and approve media releases with PIO

___ Coordinate termination of shelter operations

___ Work with Morgan County Health Department on the location, collection, and disposal of dead animals

Public Information Procedure

The Emergency Management Director will assign a Public Information Officer (PIO).

Information and instructions for the public will be coordinated and disseminated by the PIO

The PIO will clear all releases with the Emergency Management Director.

Public Information Officer Checklist

___ Obtain from the EMA Director the following information:

- Instructions to be given to the public for preparing their animals for transport and sheltering
- Animal pick-up locations
- Animal sheltering locations

___ Notify the media of plan activation and instructions to be disseminated to the public

___ Disseminated information on animal pick-up and sheltering locations to Red Cross shelters

___ Obtain status updates from EMA Director at regular intervals

___ Update media on any status changes

___ Prepare and disseminate animal retrieval information when emergency is over

Transportation Procedure

The transport of animals to medical facilities and animal shelters will be coordinated through the Morgan County Humane Society and Rescue Units with support from the Morgan County Dog Warden and the Morgan County Health Department.

Animals will be picked up at the following locations:

- ❖ Red Cross Shelters
Owners will be expected to stay with their pets until transportation can be arranged.
Weather permitting; a holding area will be designated outside the shelter.
- ❖ Designated pick-up locations based on area affected
- ❖ Animals not requiring medical care will be transported to general care shelters, which are private buildings, set up to house incoming animals.

The designated animal pick-up points as well as shelter locations will be communicated to the public through the PIO. The public will also be instructed on how to prepare their pets for transport and sheltering.

Evacuees will be encouraged to take their pets to a designated animal shelter if possible. Pet owners will be instructed through PIO releases to the media to bring their pets in a pet carrier/cage if possible.

Animals escaping confinement will be pick up by Morgan County Humane Society Rescue volunteers and taken to a shelter or veterinary facility if medical care is necessary.

All animals will be tagged with as much identifying information as possible as well as any medical information and shot records, as possible. Identification information will travel with the animal if the animal is moved to another location, including, neck collars and a paper form filled out with the above information.

Travel routes and schedules will be determined by the location of Red Cross shelters, and available vehicles.

**Transportation Manager
Morgan County Animal Rescue
Checklist**

- ___ Obtain shelter and medical care locations from EMA Director.
- ___ Coordinate pick-up locations, transportation routes, and vehicles.
- ___ Inform EMA Director of transportation routes and pick-up points that will be used.
- ___ Coordinate with Red Cross for pick-up of animals dropped off at human shelters.
- ___ Obtain sufficient personnel and vehicles to transport animals.
- ___ Mobilize vehicles to transport animals from pick-up points to appropriate facility.
- ___ As appropriate, dispatch search and rescue teams to look for animals left behind by owners.
- ___ Transport animals no longer requiring medical care from Veterinary hospitals to general shelters.

Emergency Medical Care Procedure

The lead agencies for emergency medical will be Morgan Veterinary Services, Springbrook Clinic and Morgan County Humane Society.

It is expected that during an emergency, animals may become injured and/or contaminated and require emergency medical care.

Animals needing emergency medical care will be taken to a designated veterinary clinic for treatment.

The owner of the animal will be responsible for medical cost incurred.

After treatment, when animal is sufficiently recovered, it will be transferred to a general care animal shelter.

Treatment records will be transferred with the animal.

Every effort will be made to restore participating veterinary clinics and hospitals to normal service as quickly as possible.

Veterinary clinics and hospitals will not be primary sites for general sheltering.

Non-Emergency Medical Care Procedure

General care animal shelters will have equipment and personnel to perform basic first aid. Animals requiring only first aid will be treated at general care shelters when possible. Pet owners will be responsible for any medical costs incurred.

Sheltering Procedure

After in-take triage, animals that do not require medical care will be taken to a general care animal shelter.

The Morgan County Humane Society and the County Dog Warden will be the primary care takers and will transport animals to a safe location.

If the primary care shelters become full, other general care shelters will be identified and opened by the EMA Director

Location of additional shelters will depend on which part(s) of the county is/are affected by the event.

Other potential shelters:

- ❖ Fairgrounds
- ❖ Large barns, previously arranged on private land
- ❖ Boarding kennels
- ❖ Private homes not affected by the event

Animals will be tagged with as much identifying information as possible plus a paper form filled out with duplicate information. General care shelters will provide shelter, food and water, and basic first-aid for animals until it is safe for people to return to their homes. The public will be informed through the media, via PIO, of animal retrieval information, including deadlines for picking up their pets. Animals not claimed by the pick-up deadline will be declared homeless and will be turned over to the appropriate facility that accepts and adopts homeless animals. Any animal adopted will initially be placed on a foster care basis, with owners having the right to reclaim animals for up to 6 months. Attempt will be made to locate the owner, if known. Animal owners will pay reasonable costs for sheltering.

Shelter Staffing

Shelter sites will be informed by the EMA Director on how many animals to expect.

Shelter sites will have pre-arranged call down lists of available staff/volunteers.

Shelter sites will determine how many personnel will be needed and follow their procedures to secure required staffing.

**Shelter Manager
Morgan County Animal Rescue
Checklist**

___ Obtain from EMA Director an estimated number of animals that may require shelter.

___ Arrange for sufficient personnel to open and operate initial facilities.

___ Prepare facility to receive animals, obtaining food and water sufficient for expected animals.

___ If initial facilities will not hold expected number of animals; obtain from the EMA Director additional sites that will be available.

___ Coordinate with Transportation Manager for in-take of animals being released from veterinary clinics.

___ Prepare for retrieval of animals by their owners.

___ Make arrangement with EMA Director for unclaimed animals.

Quarantine Procedure

Quarantine procedures will be under the direction of the Ohio Department of Health per ORC 941.07.

Disposal Procedure

Mass disposal, if necessary, will be under the direction of the Morgan County Health Department.

Resources needed for the disposal of animals, mass disposal or individual disposal from participating veterinary clinics, will be coordinated through the Emergency Management Agency.

AUTHENTICATION

Date

EMA Director

Date

Morgan County Humane Society

Date

Morgan County Dog Warden

Date

OSU Extension/Department of Agriculture

Date

President, Morgan County Fair Board

Date

Morgan County Health Department