

Annex C (Notification & Warning) to the Morgan County Emergency Operations Plan

NOTIFICATION & WARNING

I. PURPOSE

The purpose of this annex is to describe the process for the dissemination of warning information to response agencies/organizations and the general public throughout Morgan County in the event of an emergency.

II. SITUATION AND ASSUMPTIONS

A. Situation

1. The following locations currently have sirens in place:
The warning sirens can be simultaneously activated, except for Malta, McConnellsville; the sirens are mostly used for alerting fire personnel.
 - a. Center Township, SR 83, 17 HP Siren
 - b. Chesterhill, SR 555, 1-7 HP Siren
 - c. Malta-McConnellsville, 77 South 4th St., 1-10 HP Siren, 2-3 HP Remote Sirens
 - d. Reinersville, CR 12, 1 Unknown HP Siren
 - e. Pennsville, SR 377, 1-7 HP Siren
 - f. Stockport, Corner White and North Street and SR 266 (Municipal Bldg.) 2-3 HP Sirens
2. Local print and broadcast media will be relied upon to assist in the dissemination of warning to the general public.
3. Operational telephone and radio communications will be utilized to notify public officials, EOC staff and emergency personnel.
4. Nineteen (19) Weather Alert Radios are located at the following locations:
 - a.) One (1) each at all 6 Fire Departments in Morgan County
 - b.) One (1) at the Morgan County Sheriff's Office
 - c.) Five (5) within the Morgan Local School District
 - d.) Two (2) located at MRDD
 - e.) One (1) at the B& L Agency
 - f.) One (1) at the Morgan County Care Center
 - g.) One (1) at Mark Rest Center
 - h.) One (1) at the Fair Board
 - i.) One (1) at the Emergency Management Office
 - j.) One (1) at the Opera House, Inc.

B. Assumptions

1. Existing forms of warning will require augmentation in order to provide sufficient warning to the public.
2. The use of mobile public address systems and/or door-to-door notification by emergency response personnel will be required when a quick onset (e.g., hazardous materials spill) emergency occurs necessitating an evacuation.
3. When a warning is received, the Sheriff's Dispatcher in turn will notify all schools in the district. Additionally, warning sirens, radio broadcasts and public address systems are used to provide warning to schools, nursing homes, and major industries, institutions and places of public assembly.

III. CONCEPT OF OPERATIONS

A. Receipt and Dissemination of Warning/Notification of Governmental Officials/Emergency Response Personnel:

1. The Ohio State Patrol (OSP) is the State of Ohio Warning Point for the National Warning System (NAWAS) and operates the Ohio portion of the National Warning System (NAWAS).
2. Upon receipt of a NAWAS warning, the OSP, District 7, Post #84, Marietta, Ohio, will notify the Morgan County Sheriff. In addition to this notification, all warning will be sent over the Law Enforcement Automated Data System (LEADS) to law enforcement agencies in the warning area.
3. The County Sheriff will also receive warnings regarding severe weather, technological hazards, dam failures, widespread fires and other emergencies affecting the county.
4. The County Sheriff's Department will notify:
 - a) Emergency Management Director
 - b) Local Law Enforcement Agencies
 - c) Local Fire Departments
5. The Emergency Management Director will notify:
 - a) Board of County Commissioners
 - b) American Red Cross
 - c) Salvation Army
 - d) EOC Staff
 - e) Neighboring jurisdictions
 - f) Communications Officer

- g) Radiological Officer (if necessary)
 - h) Ohio EMA
 - i) County Health Commissioner
 - j) Hospitals
 - k) PIO
 - l) Other state agencies as needed
6. County Commissioners Office notifies:
- a) County Department Heads
 - b) Township Trustees
 - c) Emergency Management Director
(Notification/confirmation)
 - d) County clerical support staff
7. Village Police Department notifies:
- a) Mayor
 - b) Volunteer Fire Department(s)
 - c) Sheriff (notification/confirmation)
 - d) Activates village siren system
8. Mayor of village notifies:
- a) Village School Superintendent
 - b) Village Employees
 - c) Fire Department (notification/confirmation)
 - d) Police Department or Sheriff (notification/confirmation)
 - e) Street Departments
 - f) Village Utilities Department
 - g) Village Clerical Support Staff
9. Volunteer Fire Department(s) notifies:
- a) Village Employee Supervisor (Notification/confirmation)
 - b) Village Police Department (Notification/confirmation)
 - c) EMS
 - d) Activate sirens
10. PIO notifies:
- a) 6 radio stations (WATH-Athens, WOUB-Athens, WCLT-Newark, WWJM-New Lexington, WBRJ-Marietta and WHIZ-Zanesville)
 - b) 4 newspapers (Athens Messenger, Marietta Times, Times Recorder, Morgan County Herald)
11. Communications Officer notifies:
- a) Amateur Radio members

b) REACT

12. Radiological Officer (if necessary) notifies:

- a) Radiological monitors
- b) Radiological response teams

B. Dissemination of Warning to the General Public

The general public will be notified of major emergencies by:

- 1. Activation of sirens
- 2. Local broadcasts and print media
- 3. Weather-alert radios
- 4. Door-to-door notification by emergency services personnel
- 5. Mobile public address systems may be employed in neighborhood-to-neighborhood notifications
- 6. Warning and notification of hearing impaired or non-English speaking persons will be accomplished by public officials at the local and county levels by the following means:
 - a) Door-to-door or Mobile Public Address notification by emergency service officers.
 - b) Special foreign language broadcast in conjunction with standard pre-scripted text over the Emergency Broadcast System.
 - c) Pre-scripted text appealing to local officials and area residents to assist in the notification of the hearing impaired.
 - d) The use of crawlers during television ESS broadcasts and closed caption devices when available to warn the hearing impaired.

C. Phases of Emergency Management

1. Mitigation

- a) Identify warning resources
- b) Identify public service agencies that can augment the county's warning capabilities.
- c) Analyze siren locations in relation to potential hazards.
- d) Coordinate warning capabilities with neighboring counties.

2. Preparedness

- a) Test, maintain and repair warning equipment.
- b) Develop plans to warn areas not covered by existing warning systems.
- c) Develop listing of warning equipment and locations.

- d) Develop and maintain list of telephone numbers of key personnel for emergency notification.
3. Response
- a) Activate warning systems.
 - b) Implement warning procedures.
 - c) Work with Public Information Officer to distribute necessary information to the media and general public.
4. Recovery
- a) Continue the dissemination of emergency information through the PIO as long as necessary.

IV. ORGANIZATION AND ASSIGNMENT OF RESPONSIBILITIES

A. National

FEMA has the responsibility for warning the nation of an impending enemy attack or actual attack upon the United States. NAWAS (National Warning System) is a FEMA dedicated nationwide party line telephone warning system operated on a 24-hour basis. It has two National Warning Centers manned continuously by Attack Warning Officers. Dedicated telephone circuits connect the National Warning Centers to FEMA headquarters, ten FEMA regional offices, 346 other federal agencies and military installations in the continental United States and more than 2,300 city and county warning points.

B. State of Ohio

The Director of the Ohio Department of Highway Safety is responsible for operating the state-level portion of NAWAS. The Ohio Primary Warning Point is located at the Ohio State Highway Patrol Headquarters. The State alternate Warning Point is located in the State Emergency Operations Center.

1. There are 23 Warning Points located in various parts of the State.
 - a. The Morgan County Warning Point is located at the Ohio State Highway Patrol Office, Marietta, Ohio.
2. Weather Warning Centers are located at National Weather Service Offices in Columbus, Cleveland, Toledo, Cincinnati, Mansfield, Youngstown, Akron, Huntington, Dayton and Fort Wayne.

Columbus is the Weather Warning Center for Morgan County.

The National Weather Service of the U.S. Department of Commerce, National Oceanic and Atmospheric Administration

(NOAA) is the government agency responsible for the declaration and dissemination of “Severe Weather Watches and Warnings.”

An agreement between FEMA and NOAA provides for the utilization of NAWAS by the Weather Service offices for the dissemination of severe weather watches and warnings. NAWAS points are located in all Weather Services Offices in Ohio.

NOAA Weather Radio Stations provide continuous around-the-clock broadcasts of the latest weather information directly from Weather Services Offices.

The Ohio LEADS System provides for rapid dissemination of severe weather warnings to all Ohio law enforcement agencies with LEADS terminal equipment.

3. The Emergency Broadcast System (EBS) has been designed to provide an operational public warning capability to national, state and local governments. It uses the facilities and personnel of non-government communications industry on a voluntary basis and is operated by the industry under appropriate government regulations in a controlled manner. It consists of broadcast stations licensed by the FCC and participating in the Emergency Broadcast System. Refer to Tab 1 for EBS activation procedures.

The State operational areas and the local EBS are used to broadcast information on peacetime disasters or emergencies. Such use is encouraged, especially for announcing tornado watches and warnings and other natural or man-made disaster information. Listed below are EBS stations serving Morgan County.

- a. WATH, Athens, Ohio
- b. WOUB, Athens, Ohio
- c. WTVN, Columbus, Ohio
- d. WBRJ, Marietta, Ohio
- e. WCLT, Newark, Ohio
- f. WHIZ, Zanesville, Ohio

C. Local

1. The Morgan County Sheriff’s Department serves as a continuous 24-hour county warning point to alert key officials and activate the Public Warning System.
2. Notification of governmental departments and agencies is conducted through the use of telephone or radio.

3. Public notification is accomplished by the sounding of sirens, EBS broadcasts and door-to-door notification, if the situation warrants such action.
4. Warning signals for Morgan County siren system are configured to follow the Federal Emergency Management Agency (FEMA) guidance on the use of certain signals to warn people of an enemy attack, and a different signal to notify them of a peacetime disaster. The warning signals are:
 - a. Attack Warning, which is a 3-to-5 minute wavering (warbling in pitch) tone on a siren, or a series of short blasts on horns of other devices. The attack-warning signal shall mean that an actual attack against the country has been detected and that protective action should be taken immediately. The Attack Warning signal shall be repeated as often as necessary by local government authorities to obtain the required response by the population, including taking protective action related to the arrival of fallout. The meaning of the signal “protective action should be taken immediately” is appropriate for the initial attack warning and any subsequent attacks. This signal will also be used for accidental missile launch warnings.
 - b. Attention or Alert Warning is a 3-to-5 minute steady signal from sirens, horns, or other devices. This signal may be used as authorized by local government officials to alert the public to peacetime emergencies. In addition to any other meaning or requirement for action as determined by local government officials, the Attention or Alert signal shall mean to all persons in the United States, “Turn on radio or TV. Listen for essential information.”
 - c. A third distinctive signal is used for other purposes such as a local fire signal. This signal is an increasing/decreasing audible tone.

V. DIRECTION AND CONTROL

- A. The County Sheriff will report to the EOC upon its activation. From this location he will coordinate the dissemination of warning information to the general public.
- B. The County PIO will coordinate the release of emergency public information through the media.
- C. Should public warning for a natural disaster threat become necessary:

1. Police and fire departments with sirens will activate those warning systems.
2. NWS will issue warning broadcast over Weather Alert Radios.
3. EBS system will be activated to broadcast warnings over local radio stations.

VI. CONTINUITY OF GOVERNMENT

- A. The line of succession for the Morgan County Notification and Warning Officer is as follows:
 1. County EMA Director
 2. Morgan County Sheriff
 3. All County Fire Chiefs
- B. Refer to Tab11, Procedures for the Relocation & Safeguarding of Vital Records in the Basic Plan and Tab 3, Procedures for the Protection of Government Resources, Facilities, and Personnel in Annex N, Resource Management.

VII. ADMINISTRATION AND LOGISTICS

- A. Equipment

Tab 2 is a map showing siren locations and ranges within the county. Tab 7 is a list of facilities with weather alert radios.
- B. Warning System Tests

The Morgan County siren system is tested weekly. The county notification list is tested annually.

VIII. PLAN DEVELOPMENT AND MAINTENANCE

- A. All county offices with emergency notification/warning responsibilities (reference Section III. A. and B. of this annex) are responsible for reviewing this annex at least once a year and submitting new or updated information to the county Emergency Management Director, commencing one year from the approval date of this document or more often as necessary.
- B. Law enforcement agencies and fire departments with warning duties are responsible for developing and maintaining departmental SOPs mutual-aid agreements, personnel rosters including 24-hour emergency notification telephone numbers and equipment inventories.

IX. AUTHORITIES AND REFERENCES

- A. Authorities

Not used. See Item IX.A. of the Basic Plan.

B. References

Not used. See Item IX.B. of the Basic Plan.

X. ADDENDUMS

Tab 1 – Emergency Broadcast System (EBS) Activation Procedure

Tab 2 – Siren Locations & Ranges

Tab 3 – Flood Warning System

Tab 4 – National Weather Service County Warning Areas

Tab 5 – NAWAS Warning Fan out

Tab 6 – Ohio EBS Operational Areas

Tab 7 – List of Facilities with Weather Alert Radios

Appendix 1 – Nuclear Attack Procedures Warning of Unauthorized or Accidental Launch of a Nuclear Weapon

XI. AUTHENTICATION

Date

Notification & Warning Officer

Date

EMA Director

Date

Morgan County Sheriff

Date

Center Township Fire Chief

Date

Chesterhill Fire Chief

Date

M&M Fire Chief

Date

Pennsville Fire Chief

Date

Reinersville Fire Chief

Date

Stockport Fire Chief

EMERGENCY ALERT SYSTEM (EAS) ACTIVATION PROCEDURES

I. PURPOSE

The purpose of this tab is to establish activation procedures for the Morgan County EAS System.

II. SITUATIONS

- A. Morgan County is part of the Central Emergency Broadcast System operational area, which encompasses 13 counties (Delaware, Fairfield, Fayette, Franklin, Hocking, Licking, Madison, Marion, Morgan, Muskingum, Perry, Pickaway, and Union).
- B. As a part of this Operational Area, Morgan County officials may activate the entire 13 county operational area for widespread emergencies.
- C. When only the local area is affected, individual radio stations nearby the county may be used to broadcast emergency information without activating the 13 county operational area.
- D. The primary operational area EBS originating station is WCOL-AM (1230) & WCOL-FM (92.3) located in Columbus, Ohio.
- E. The EBS CPCS-2 alternate originating station is WTVN-AM (610) located in Columbus, Ohio. This secondary station is used only when the primary station cannot be reached.
- F. The sister station to WTVN-AM is WLVQ-FM (96.3), which will also air all EAS programming.
- G. The EAS stations located near Morgan County for local EAS activation's are:
 - 1. WATH-AM (960) and WXTQ-FN (105.5), Athens
 - 2. WOUB-AM (1340) and WOUB-FM (91.3), Athens
 - 3. WBRJ-AM (910) and WEYQ-FM (94.3), Marietta
 - 4. WCLT-AM (1430) and WCLT-FM (100.3), Newark
 - 5. WHIZ-AM (1240) and WHIZ-FM (102.5), Zanesville
- H. The EAS system may be activated to notify the general public of an immediate threat to the life, health, safety, and property of the population.

A. Authorized Notifiers

1. The designated officials authorized to request activation of the operational area EAS or the local (in-county) EAS are the Morgan County Emergency Management Director and the county sheriff.
2. Other local officials must request activation of the EAS system through the authorized notifiers listed above.
3. In the event of a local emergency not requiring activation of the entire operational area EAS. The authorized notifiers may request activation of Morgan County EAS stations by contacting each individual EBS station in the county.
4. All local EAS stations may be activated collectively, or specific, individual stations broadcasting in the affected area may be activated.
5. The Morgan County EAS may be activated on a day-to-day basis in response to such emergencies as tornadoes, severe storms, flash floods, widespread fires, discharge of toxic chemicals or gases, industrial explosions, widespread power failures, civil disturbances or any other occurrence which poses an immediate threat to health, life, safety or property of the population.

B. Requests for Activation of EAS

1. When requesting EAS notification, notifiers will use code words issued to them by the EAS communications committee to authenticate requests.

C. Request for Activation of Local EAS

1. Authorized notifiers may request activation of the local EAS for emergencies confined within the county.
2. Authorized notifiers request activation of the local EAS as follows:
 - a. Call EAS CPCS-1 or EAS stations serving the affected area/s.
 - b. Identify self with both name and title.
 - c. Give the date.
 - d. Designate the message to be broadcast.
 - e. Give code word * and location from which notifier is calling.

D. EAS Stations Broadcast Procedures:

1. After the station has been contacted and authenticated the request for activation, radio station personnel will broadcast the following announcement.

 “We interrupt this program because of a local emergency. Important emergency information will follow.”
2. The radio station will broadcast a two-tone EAS attention signal.
3. At the end of this two-tone signal, the station will broadcast the following:

 “We interrupt this program because of a local emergency (station personnel will read the text of the message).”
4. Upon completion of the EAS message, the following announcement will be made:

 “This concludes this activation of the Morgan County Emergency Alert System. Stay tuned to this station for further information.”
5. The Morgan County EAS system functions on a message-by-message basis; therefore, if follow-up messages are required, the same procedure as listed in III.A.3. must be repeated.

* = Code words for EAS activation are confidential in nature and have been made available to primary notifiers.

EAS MESSAGE #1
(NO ACTION NECESSARY ANNOUNCEMENT)

MESSAGE: The following emergency bulletin has been released by the Morgan County Emergency Management Agency and Office of Homeland Security:

“THE (Ordering Authority) HAS ANNOUNCED THAT AN EMERGENCY PRESENTLY EXISTS AT _____. AT THIS TIME NO PROTECTIVE ACTIONS ARE NECESSARY ON THE PART OF THE PUBLIC. DISASTER AND HEALTH SERVICE OFFICIALS ARE ASSESSING THE SITUATION. FURTHER INFORMATION WILL BE PROVIDED THROUGH THIS STATION AS IT BECOMES AVAILABLE.”

“ONCE AGAIN.... THERE IS NO IMMEDIATE RISK OF CHEMICAL EXPOSURE. STAY TUNED TO THIS STATION FOR FURTHER INFORMATION. AVOID USING TELEPHONES UNLESS YOU HAVE A REAL EMERGENCY.”

For Station Use:

Starting Time: _____ A.M., P.M.

Rebroadcast every _____ minutes

Duration _____ hours or upon cancellation notification.

NOTE: This sample message has been included for optional use should rumors or inaccurate news releases occur.

EAS MESSAGE #2
(SHELTERING REQUIRED)

MESSAGE: The following emergency bulletin has been released by the Morgan County Emergency Management Agency and Office of Homeland Security:

“THE (Ordering Authority) HAS ANNOUNCED THAT AN EMERGENCY PRESENTLY EXISTS AT _____. PERSONS WHO LIVE WITHIN A _____ MILE RADIUS OF THIS LOCATION ARE ADVISED TO TAKE SHELTER...THIS MEANS GO INDOORS. PERSONS LIVING, WORKING, OR TRAVELING IN THE LOCATION OF _____ ARE AFFECTED BY THIS ADVISORY.”

“WHEN TAKING SHELTER, YOU SHOULD:

- a) CLOSE ALL WINDOWS AND DOORS AND REMAIN INSIDE.
- b) TURN OFF ALL AIR CONDITIONS, HEATERS, FANS, AND OTHER VENTILATION SYSTEMS WHICH DRAWS AIR IN FROM THE OUTSIDE.
- c) STAY TUNED TO THIS STATION FOR ANY FURTHER INFORMATION AND INSTRUCTIONS.”

IF SCHOOL IS IN SESSION

“IF SCHOOL IS IN SESSION, YOU ARE REQUESTED NOT TO TELEPHONE OR GO TO THE SCHOOL YOUR CHILD ATTEND (S). THEY ARE SAFELY SHELTERED AND WILL BE BUSED HOME WHEN IT IS SAFE TO DO SO. DO NOT TIE UP TELEPHONE LINES UNLESS YOU HAVE A REAL EMERGENCY.”

“STAY TUNED TO THIS STATION FOR FURTHER INFORMATION AND INSTRUCTIONS.”

For Station Use:

Starting Time: _____ A.M., P.M.

Rebroadcast every _____ minutes

Duration _____ hours or upon cancellation notification

EAS MESSAGE #3
(EVACUATION ANNOUNCEMENT)

MESSAGE: The following emergency bulletin has been released by the Morgan County Emergency Management Agency and Office of Homeland Security:

“THE (Ordering Authority) HAS ANNOUNCED THAT A FULL EMERGENCY PRESENTLY EXISTS AT _____ AND HAS RECOMMENDED THE EVACUATION OF ALL PERSONS WHO LIVE OR WORK WITHIN _____ MILES OF THIS LOCATION. PERSONS LIVING, WORKING, OR TRAVELING IN THE AREA OF _____ ARE AFFECTED BY THIS ADVISORY.” (repeat area affected, specify roads if possible)

“YOUR ROUTE OF TRAVEL SHOULD BE AWAY FROM THE SITE OF THE EMERGENCY. TRAVEL TO A COLLECTION CENTER LOCATED AT _____. YOU WILL RECEIVE AID AND INFORMATION AT A COLLECTION CENTER. IF POSSIBLE, ASSIST NEIGHBORS WHO ARE ILL, DISABLED, OR NEED TRANSPORTATION. IF SPECIAL HELP IS NEEDED, TELEPHONE _____.” (repeat)

PLAN TO BE AWAY FROM YOUR HOME A FEW HOURS (OR A FEW DAYS)...DO NOT PANIC, BUT QUICKLY COLLECT A CHANGE OF CLOTHES, PERSONAL ITEMS NEEDED, MEDICATION, INFANT NEEDS, MONEY AND IMPORTANT PAPERS. TURN OFF ALL APPLIANCES, PROVIDE FOOD AND WATER FOR ANIMALS/PETS, CLOSE WINDOWS AND LOCK DOORS. MASS CARE SERVICES WILL BE PROVIDED AT SHELTERS.”

“IF YOU HAVE HEARD THIS MESSAGE AND ARE NOT IN NEED OF ASSISTANCE, PLEASE HELP SPEED THIS VERIFICATION BY SIGNIFYING THAT YOU HAVE BEEN ALERTED. TO DO THIS, YOU SHOULD TIE A WHITE CLOTH OR TOWEL TO YOUR DOORKNOB, MAILBOX, OR OTHER OBJECT VISIBLE FROM THE ROAD.”

“IF YOU NEED ASSISTANCE, DO NOT USE THE WHITE CLOTH. POLICE OF FIRE DEPARTMENT OR EMERGENCY SQUAD PERSONNEL WILL CHECK ALL BUILDINGS NOT DISPLAYING A WHITE TOWEL AND ASK WHAT ASSISTANCE YOU REQUIRE.”

“IF SCHOOLS ARE IN SESSION, CHILDREN WILL BE BUSED TO _____. DO NOT ATTEMPT TO PICK UP CHILDREN AT SCHOOLS; IT WILL CAUSE TRAFFIC CONGESTION AND ENDANGER CHILDREN AND DRIVERS ALIKE.”

“LISTEN TO RADIO/TV FOR MORE INFORMATION AND INSTRUCTIONS.”

For Station Use:

Starting Time _____ A.M., P.M.

Rebroadcast every _____ minutes

Duration _____ hours or upon cancellation notification

EAS MESSAGE #4
(ALL CLEAR)

MESSAGE: THE FOLLOWING EMERGENCY BULLETIN HAS BEEN RELEASED BY THE MORGAN COUNTY EMERGENCY MANAGEMENT AGENCY AND OFFICE OF HOMELAND SECURITY, CONCERNING THE HAZARDOUS MATERIALS INCIDENT AT _____.

“AUTHORITIES ON THE SCENE HAVE NOW DETERMINED THAT THE SITUATION IS NOW UNDER CONTROL AND THEY HAVE ANNOUNCED AN ALL CLEAR FOR THE RESIDENTS OF THE AREA.”

“AUTHORITIES ALSO RELEASED THE FOLLOWING INFORMATION AND INSTRUCTIONS:”

1. _____
2. _____
3. _____
4. _____

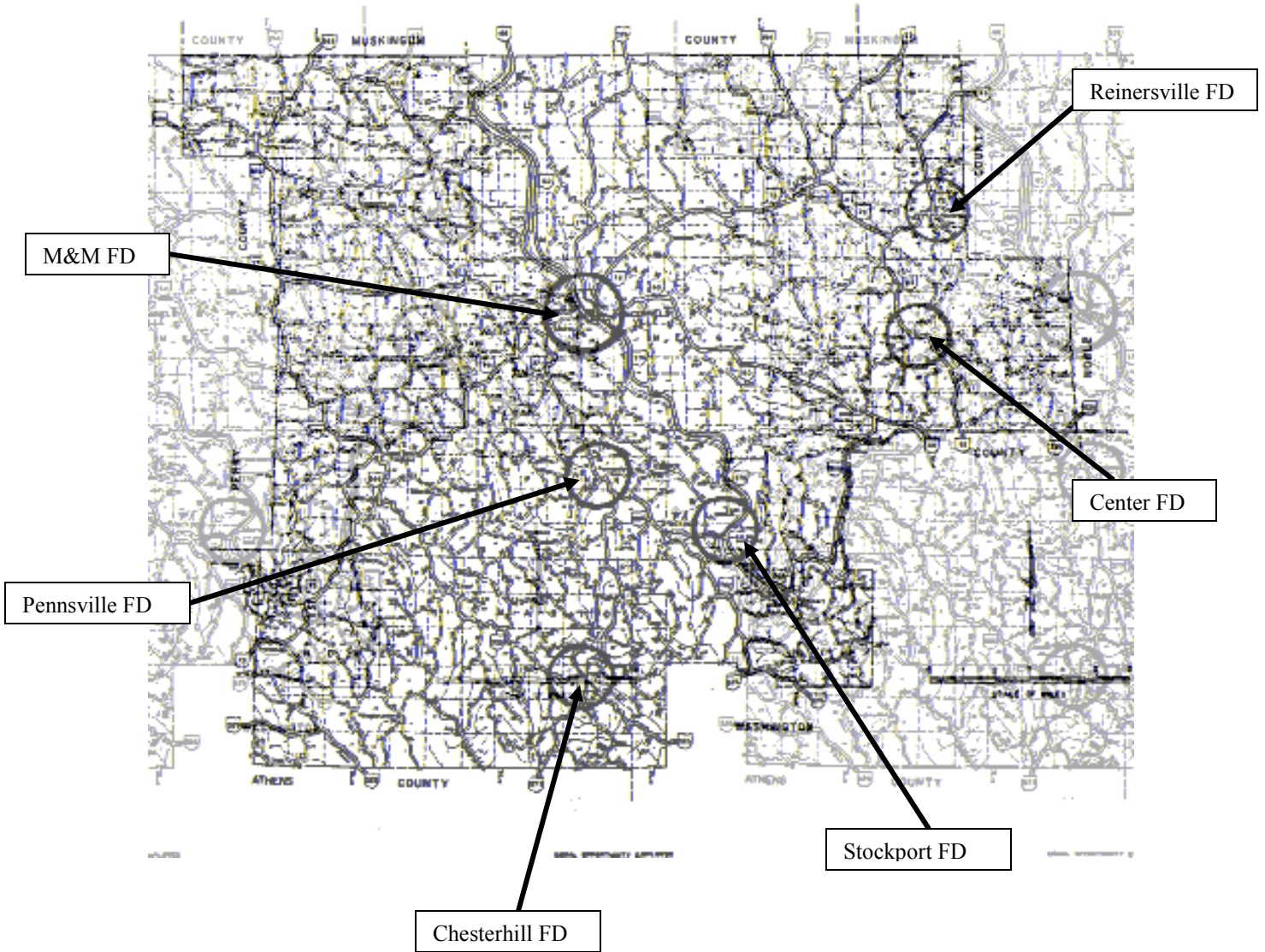
For Station Use:

Starting Time: _____ A.M., P.M.

Rebroadcast every _____ minutes

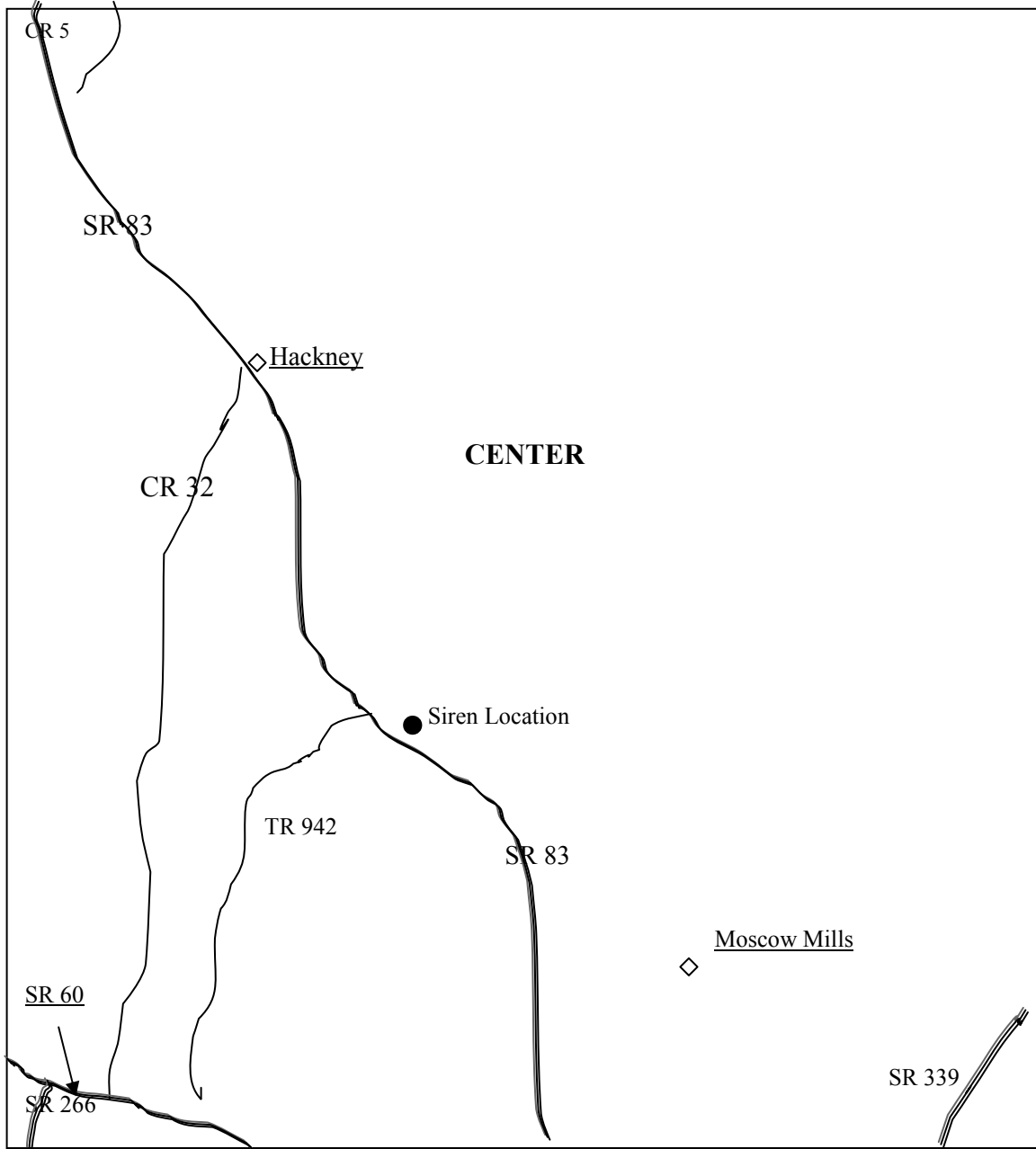
Duration _____ hours or upon cancellation notification

Siren Locations & Ranges



MORGAN COUNTY 58

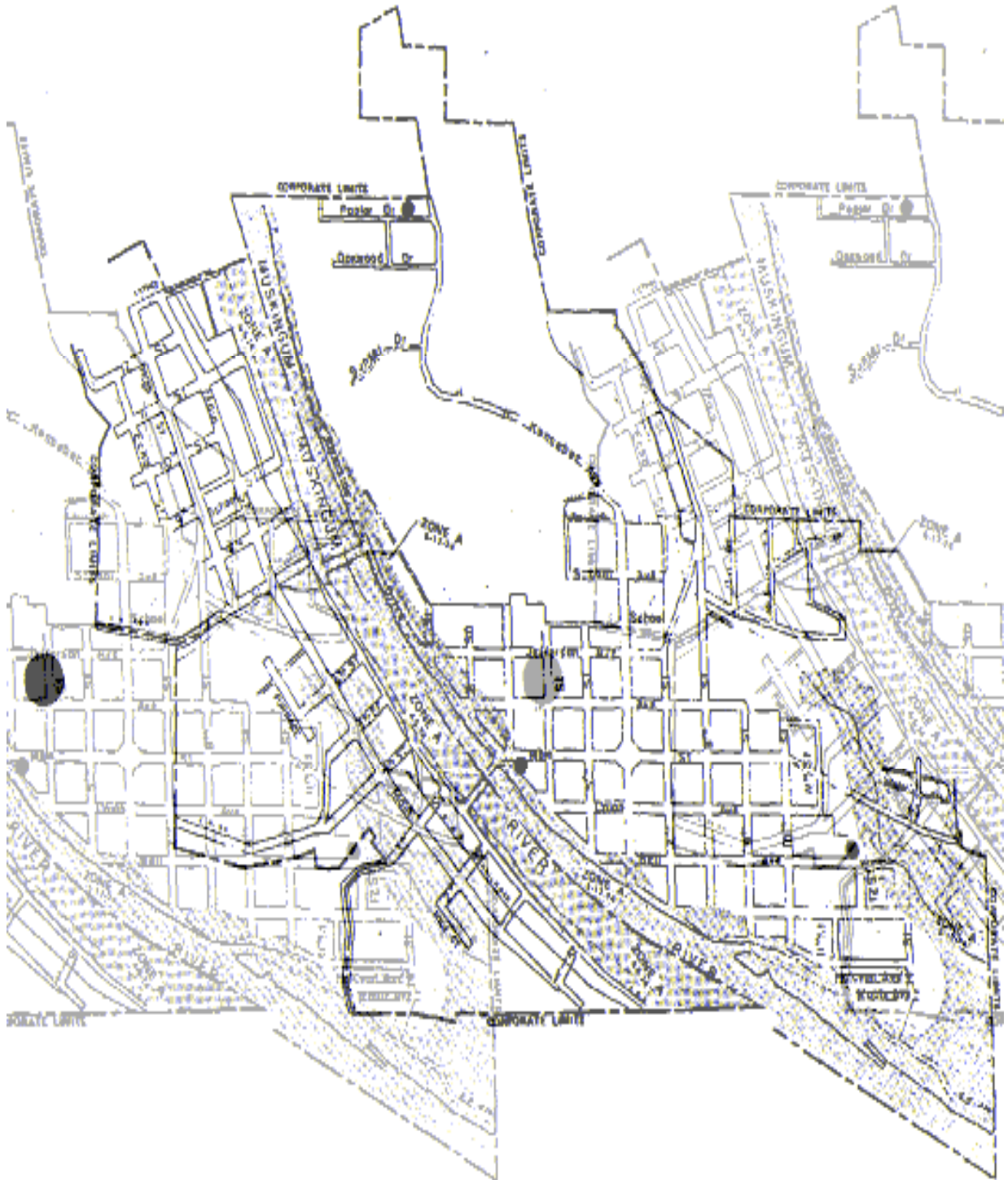
**SIREN LOCATIONS
(Center Township)**

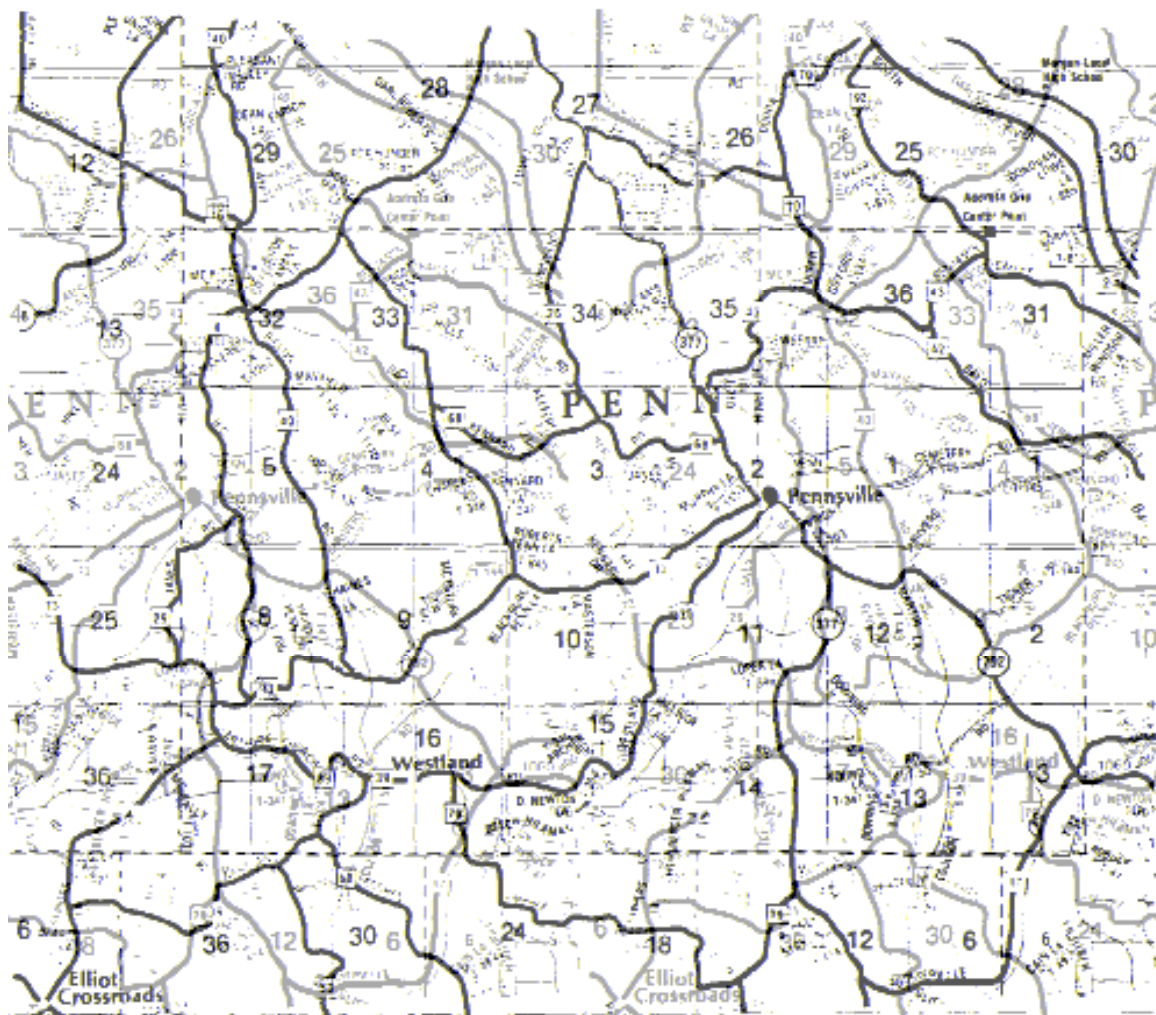


Siren Locations

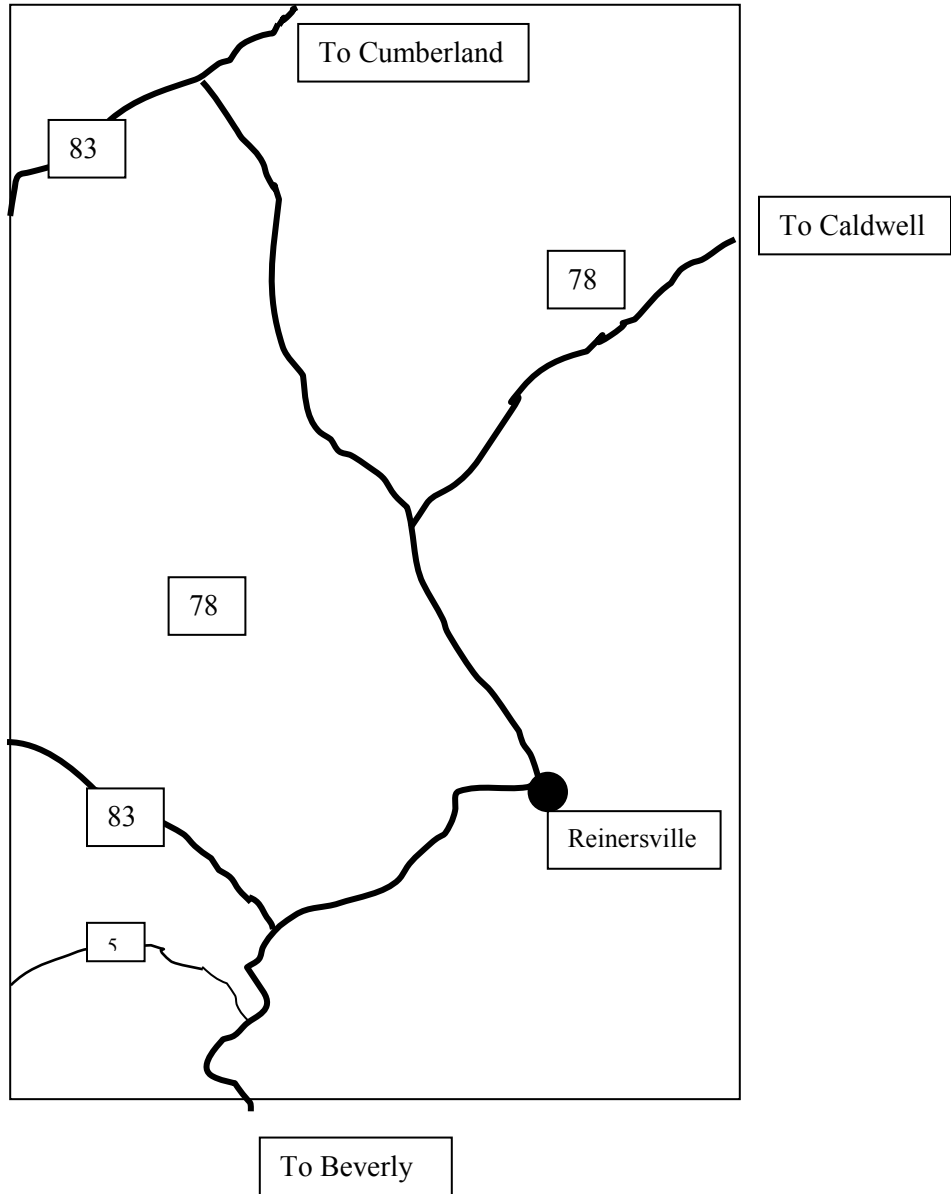


Malta/McConnellsville

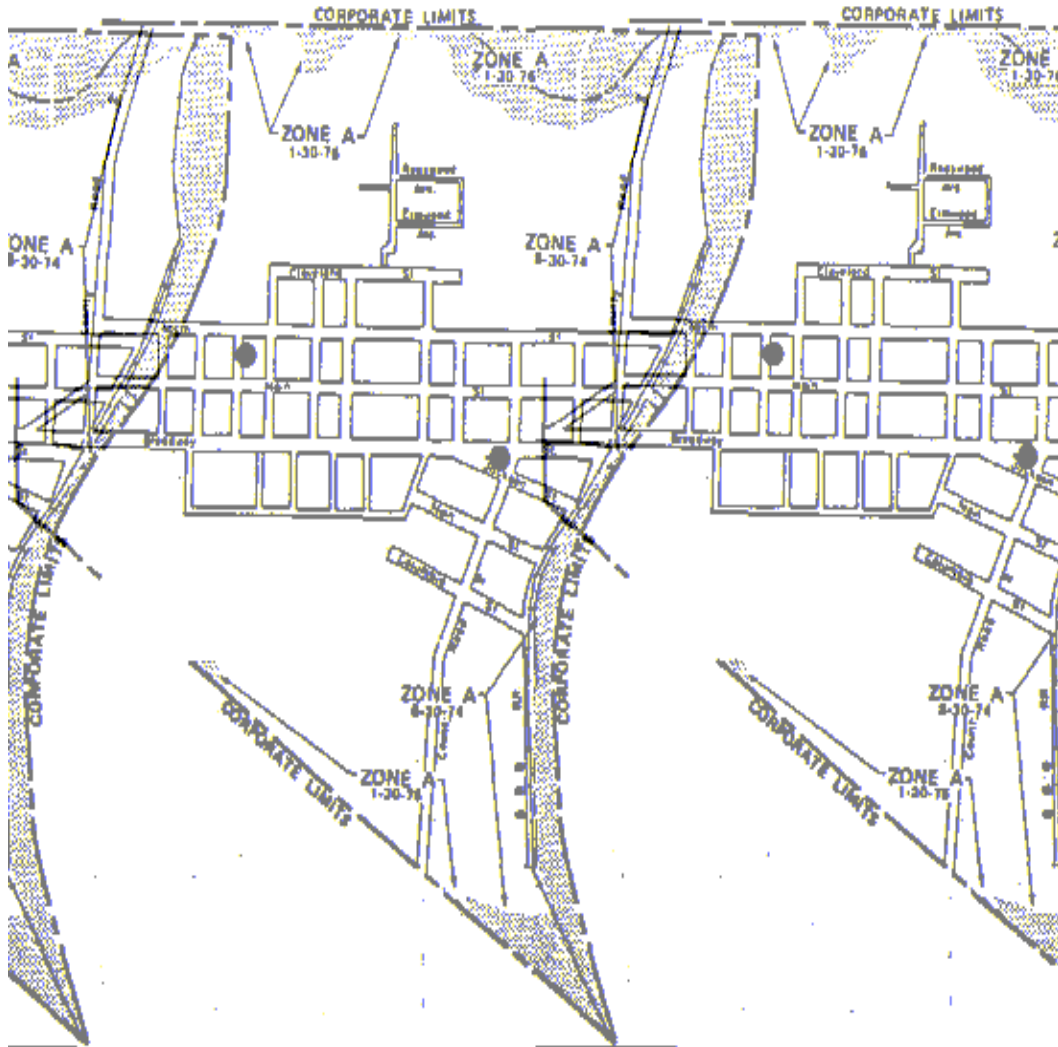




**Siren Location
Manchester Township**



Stockport



MORGAN COUNTY WARNING PLAN
FLOOD WARNING SYSTEM

I. PURPOSE

This tab provides information and procedures for warning should flood or high waters threaten the area.

II. SITUATION AND ASSUMPTIONS

A. Situation

1. There is no fixed public warning system for flood emergencies in those areas.
2. The best means of warning residents of the total county is by commercial radio.
3. The best means of warning residents who are in the specific threatened area(s) is by vehicle patrol and/or door-to-door.
4. Monitoring the sheriff's frequency and the local police frequency will give information on trouble spots.
5. EMA has five (5) rain gauges within the county.

B. Assumptions

1. The National Weather Service will issue flood watches, warnings, and advisories as necessary.
2. The local radio stations will broadcast information as released by the weather service and by local officials.
3. The sheriff's patrol will be alert to any high water conditions in their jurisdiction.
4. The local police personnel will be alert to any high water conditions in their jurisdiction.

III. PROCEDURES

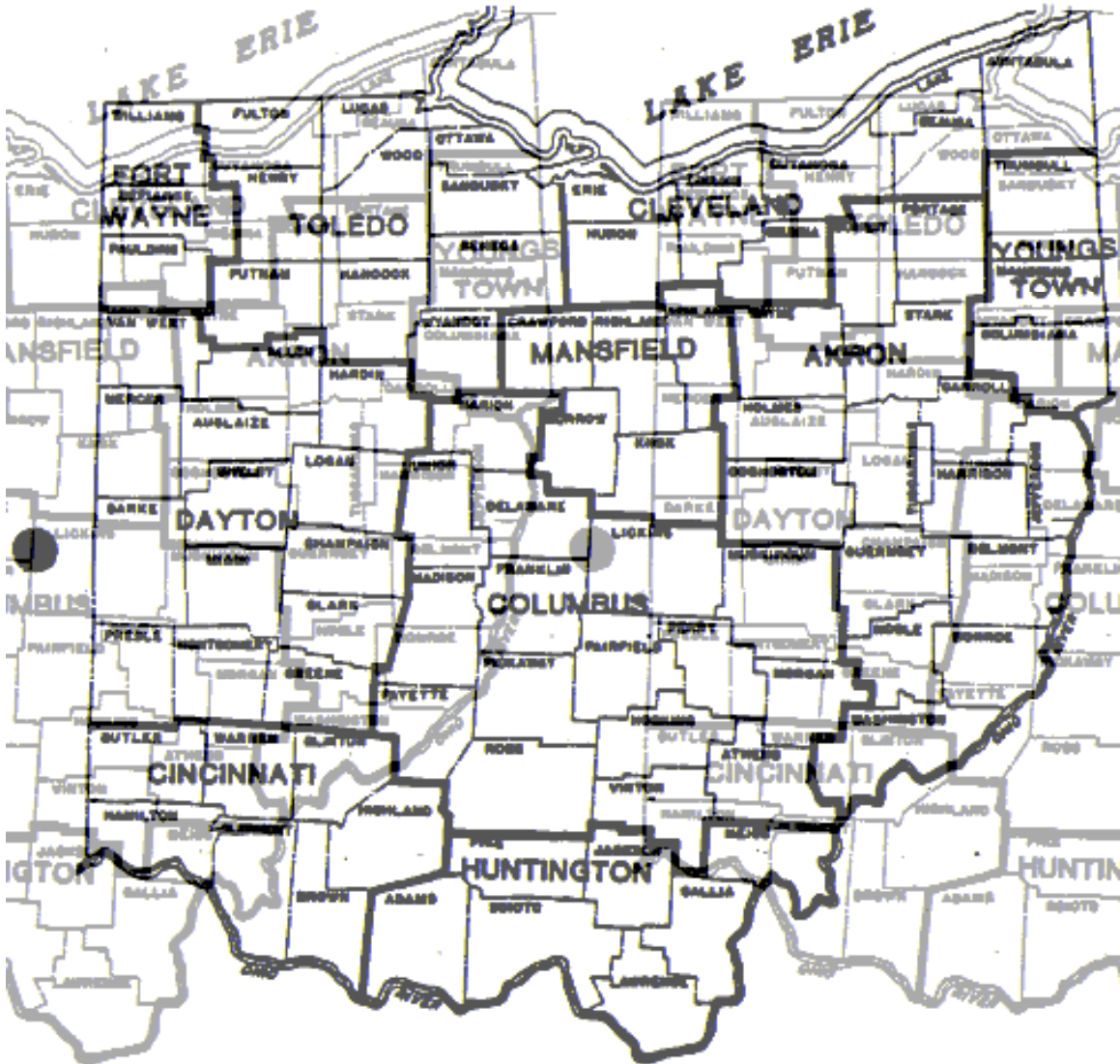
- A. Rain gauge personnel will report to the County Engineer's Office when it exceeds normal amount/time ratio.

- B. Emergency Management will remain in constant contact with officials and/or departments in each endangered entity.
- C. Should property and residents be threatened, EMA in cooperation and coordination with local fire and police personnel will:
 - 1. Drive through the threatened area and advise residents of the situation.
 - 2. Make door-to-door contact with residents.
 - 3. Keep the local radio station informed of the threatened areas and ask that the information be broadcast.

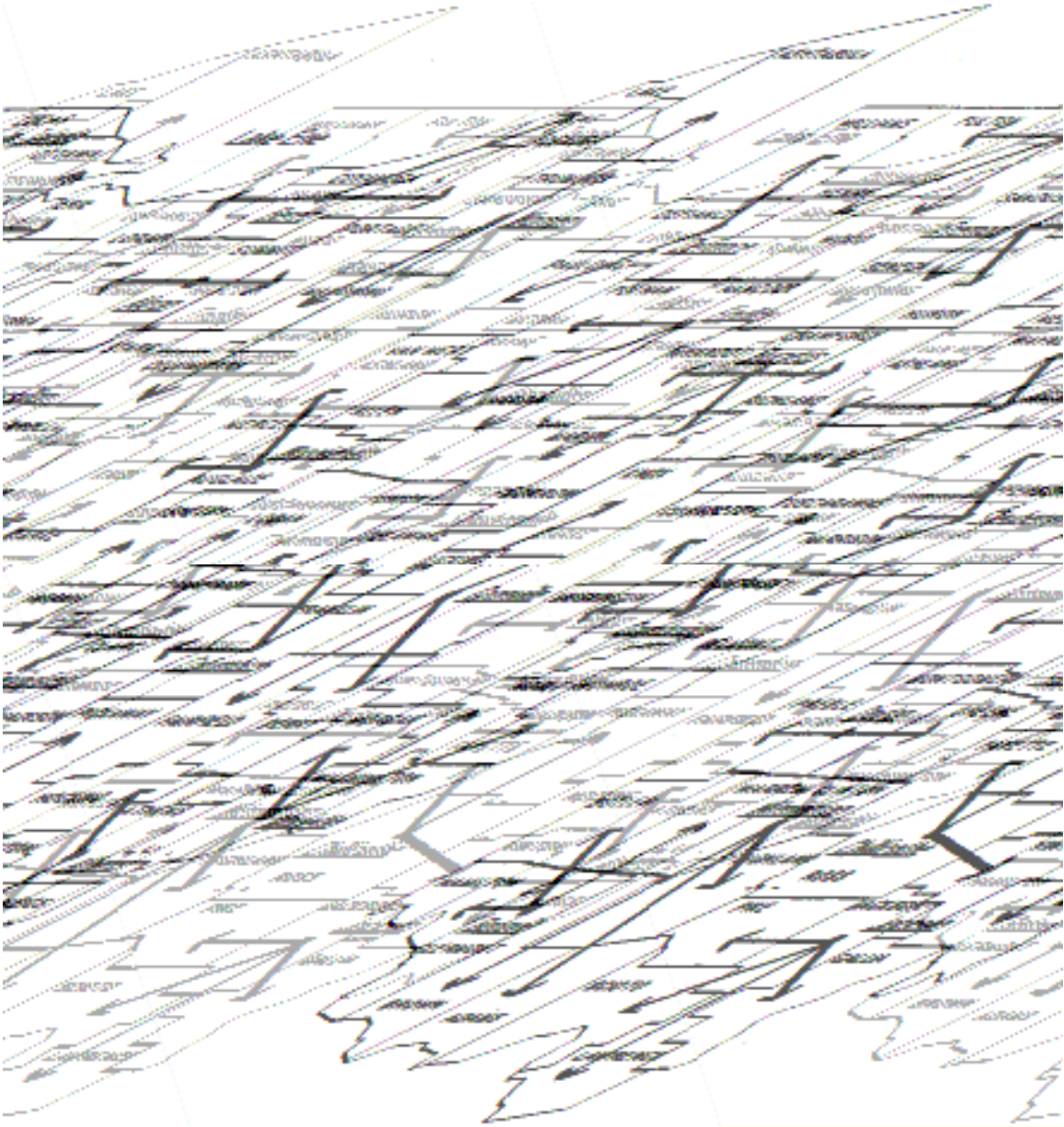
IV. DEFINITIONS

- A. A flood is a body of water that covers normally dry land.
- B. Flash flooding is flooding that follows the causative event within a short period of time.
- C. Urban and drainage flooding is a condition that occurs with some thunderstorms when heavy downpours of rain produce more water than sewers or drainage ditches can handle.
- D. Common causes of river floods include too much rain at one time and/or the sudden melting of snow and ice. Heavy rains produce flash floods if the rain causes small rivers or streams to rise suddenly and overflow.

MORGAN COUNTY WARNING PLAN
National Weather Service County Warning Areas



**MORGAN COUNTY WARNING PLAN
NAWAS WARNING FAN OUT**



MORGAN COUNTY WARNING PLAN
OHIO EAS OPERATIONAL AREAS



MORGAN COUNTY WARNING PLAN

LIST OF FACILITIES WITH WEATHER ALERT RADIOS

Center Township Fire Department..... 1

Chesterhill Fire Department..... 1

M&M Fire Department..... 1

Pennsville Fire Department..... 1

Reinersville Fire Department..... 1

Stockport Fire Department..... 1

Morgan County Sheriff’s Department 1

Morgan Local School District..... 5

MRDD..... 2

B&L Agency..... 1

Morgan County Care Center..... 1

Mark Rest Center 1

Morgan County Fair Board..... 1

EMA Office 1

Opera House, Inc. 1

MORGAN COUNTY WARNING PLAN

Appendix 1 (Nuclear Attack) to Annex C (Notification & Warning) to the Morgan County Emergency Operations Plan

NUCLEAR ATTACK PROCEDURES WARNING OF UNAUTHORIZED OR ACCIDENTAL LAUNCH OF A NUCLEAR WEAPON

I. PURPOSE

This appendix covers procedures for warning, specifically applicable to accidental launch of a nuclear weapon.

II. SITUATION AND ASSUMPTIONS

A. Situation

1. A U.S. – U.S.S.R. agreement exists for the purpose of reducing the risk of nuclear war because of an accidental, unauthorized, or any other unexplained incident involving a possible detonation of a nuclear weapon.
2. In the highly unlikely event of such an incident (for example, an accidental missile launch which could threaten the U.S. with a possible nuclear detonation, warning would be disseminated over the National Warning System (NAWAS).

B. ASSUMPTIONS

1. The time available to warn the public of danger from the accidental launch of a nuclear weapon would be very short, probably a matter of minutes, in the area threatened by the impact of the weapon.
2. More time would be available to warn the public outside the projected impact of the weapon.

III. CONCEPT OF OPERATIONS

The concept of operations for this contingency is summarized in Attachment 2 to this appendix.

A. Organization

Not used. See Section IV.A. of the Notification & Warning Annex.

B. Responsibilities

The Morgan County Emergency Management Agency and Office of Homeland Security will develop and maintain procedures for the warning point staff covering this contingency. This procedure is given in Attachment 3 to this appendix.

Not used. See Section V. of the Notification & Warning Annex.

VI. CONTINUITY OF GOVERNMENT

Not used. See Section VI of the Notification & Warning Annex.

VII. ADMINISTRATION AND LOGISTICS

Not used. See Section VII of the Notification & Warning Annex.

VIII. PLAN DEVELOPMENT AND MAINTENANCE

Not used. See Section VIII of the Notification & Warning Annex.

IX. AUTHORITIES AND REFERENCES

A. Authorities

Not used. See IX.A. of the Basic Plan.

B. References

Not used. See IX.B. of the Basic Plan.

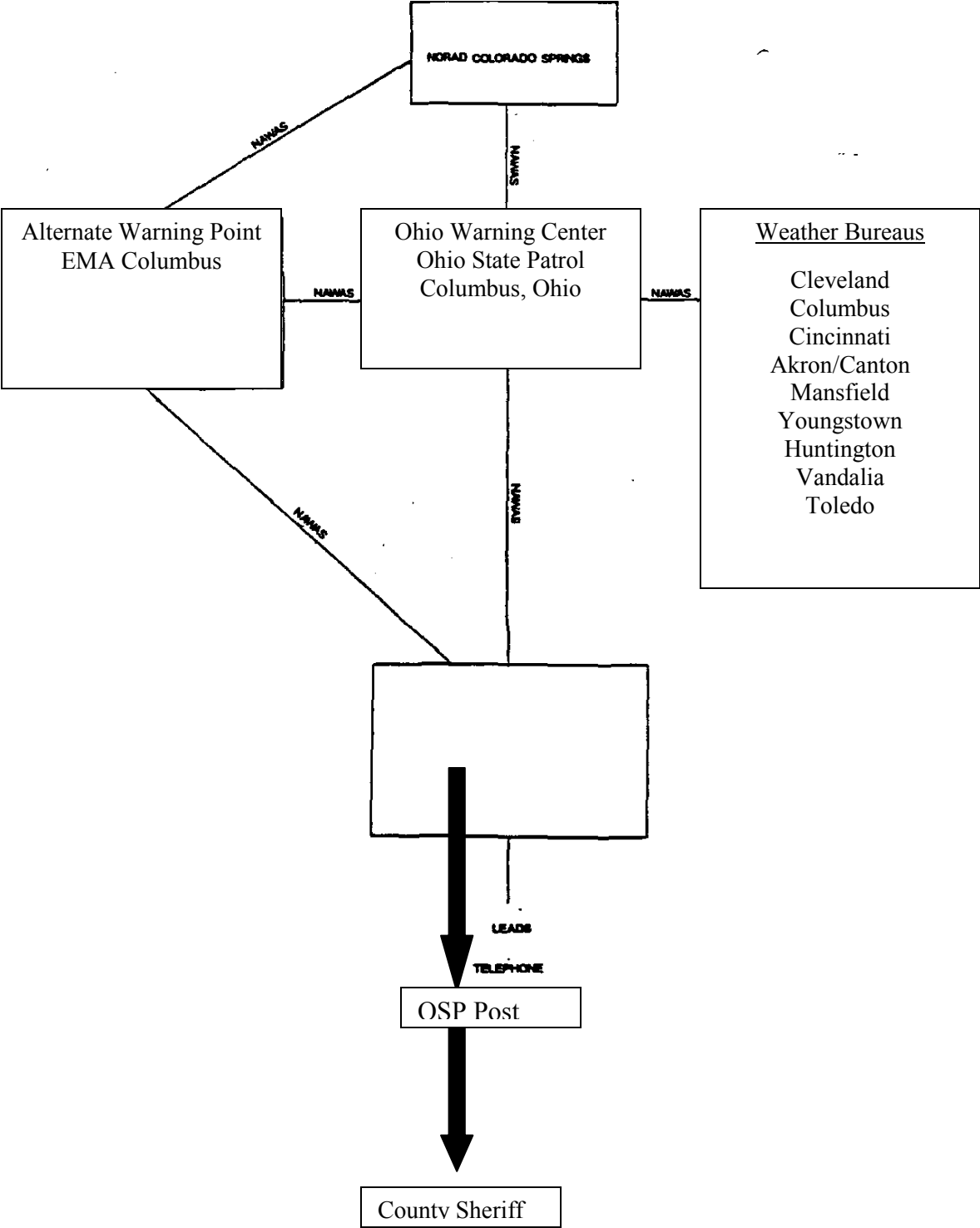
X. ADDENDUMS

Attachment 1-Attack Warning Procedures Notification Chart

Attachment 2-Concept of Operations Procedures

Attachment 3-Procedures Upon Warning of Unauthorized or Accidental Launch of a Nuclear Weapon.

MORGAN COUNTY WARNING PLAN



MORGAN COUNTY WARNING PLAN

NAWAS Message:	JURISDICTIONS IN THREATENED AREA	Jurisdictions in Rest of U.S.	
		Within about 500 Miles of Threatened Area	Elsewhere in the U.S.
1. Initial Warning of Accidental Launch	<ul style="list-style-type: none"> -Warn citizens to take cover IMMEDIATELY -Activate EOC and secure phone lines to broadcast stations 	All U.S. Jurisdictions: -Activate EOC and secure phone lines to broadcast stations -Advise citizens to take no protective actions, but stand by for further instructions	
2. Nuclear Detonation has occurred (NUDET) has occurred (minutes after initial warning)	<ul style="list-style-type: none"> -Citizens remain under cover -Conduct emergency operations as feasible 	<ul style="list-style-type: none"> -Advise citizens to prepare promptly to protect themselves from fallout (if NUDET proves to have been a surface blast) -Mobilize RADEF system -Prepare to provide support for impact area if requested by State 	<ul style="list-style-type: none"> -All areas provide Emergency Public Information (EPI) -Access of possible low-level fallout threat mobilize RADEF system and prepare to take countermeasures
3. Impact Occurred without NUDET (minutes after initial warning)	<ul style="list-style-type: none"> -Advise citizens to remain under cover until further notice -Seek assistance through State to determine if a hazard exists from weapon material 	<ul style="list-style-type: none"> -Advise citizens that fallout protection will be required -Phase down EOC staffing as instructed by State 	<ul style="list-style-type: none"> -Advise citizens that no NUDET occurred and that there will thus be no fallout threat anywhere -Phase down EOC staffing as instructed by State
4. NUDET identified air burst (no fallout resulted) (This information may be received from State or Region, one to several hours after initial warning)	<ul style="list-style-type: none"> -Citizens remain under cover -Conduct emergency operations as feasible 	<ul style="list-style-type: none"> -Advise citizens to suspend actions to protect themselves from fallout -Provide support for impact area, if requested by State 	<ul style="list-style-type: none"> -Advise citizens there will be no fallout threat anywhere

MORGAN COUNTY WARNING PLAN

PROCEDURES UPON WARNING OF UNAUTHORIZED OR ACCIDENTAL LAUNCH OF A NUCLEAR WEAPON

This attachment establishes procedures for the Morgan County Warning Point staff in case NAWAS warning is received of an accidental, unauthorized, or any other unexplained incident involving a possible detonation of a nuclear weapon anywhere in the United States. Procedures below are for an accidental missile launch, and will be modified as necessary for other emergencies involving a possible nuclear weapon detonation.

1. If NAWAS warning is received of an accidental missile launch (or any other unauthorized or unexplained incident involving possible detonation of a nuclear weapon) which THREATENS Morgan County, the Morgan County Warning Point operator will IMMEDIATELY:
 - a. Sound the Attack Warning signal on all fixed sirens and instruct police vehicles to augment fixed siren coverage.
 - b. Call EAS CPCS-1 station WCOL (AM/FM) by telephone and instruct them to broadcast the emergency public instructions below IMMEDIATELY, repeating the message until instructed otherwise; also, ASK THEM TO STANDBY FOR FURTHER NOTIFICATIONS. The emergency public instructions are:

WE HAVE BEEN NOTIFIED BY THE NATIONAL WARNING CENTER THAN AN ACCIDENTAL MISSILE LAUNCH THREATENS THIS AREA AT (LOCAL) TIME. A NUCLEAR EXPLOSION COULD OCCUR. TAKE COVER IMMEDIATELY BY LYING DOWN IN A BASEMENT OR IN THE CENTRAL PART OF A BUILDING, OUT OF LINE OF FLYING GLASS.

(Note: The above emergency public instruction should also be pre-positioned with broadcast station(s) serving the area and should be kept at the local warning point.)

- c. Alert key officials as follows:

(A list of key officials including the Chief Executive, Emergency Management Director, Radiological Protection Officer, and EOC staff-with day and night telephone numbers should be maintained at the county Warning Point.)

2. If NAWAS warning is received that an accidental missile launch or other incident threatens some part of the U.S. NOT in the Morgan County area, IMMEDIATELY:

- a. Call CPCS-1 EAS station WCOL (AM/FM) by telephone and instruct them to broadcast the emergency public instructions below; also, STANDBY FOR FURTHER NOTIFICATIONS.

WE HAVE BEEN NOTIFIED BY THE NATIONAL WARNING CENTER THAT (CITY,STATE) IS THREATENED BY AN ACCIDENTAL MISSILE LAUNCH. YOU NEED NOT TAKE COVER OR TAKE OTHER PROTECTIVE ACTIONS AT THIS TIME. WE WILL GIVE YOU ADDITIONAL INFORMATION AND ADVICE AS SOON AS IT IS AVAILABLE. STAY TUNED TO THIS STATION FOR FURTHER INSTRUCTIONS.

(Note: The public instructions should be pre-positioned with broadcast station(s), also kept at the warning point.)

- b. Alert key officials per 1c above.

3. If NAWAS warning is received that a nuclear detonation has occurred and that fallout can be expected in the Morgan County area “WITHIN ONE HOUR”:

- a. Sound attack Warning per 1a above.
- b. Instruct EAS station WCOL (AM/FM) to broadcast the emergency public instructions below, IMMEDIATELY, repeating the message until instructed otherwise; also, STANDBY FOR FURTHER NOTIFICATIONS.

WE HAVE BEEN NOTIFIED BY THE NATIONAL WARNING CENTER THAT AN ACCIDENTALY LAUNCHED NUCLEAR WEAPON EXPLODED IN (CITY,STATE) AT (LOCAL TIME). THE NUCLEAR EXPLOSION MAY HAVE PRODUCED DANGEROUS RADIOACTIVE FALLOUT.

FALLOUT MAY ARRIVE HERE BY (LOCAL TIME). IF FALLOUT DOES ARRIVE, YOU WILL NEED PROTECTION TO AVOID DEATH OR SERIOUS RADIATION SICKNESS. DO NOT USE THE TELEPHONE.

LISTEN CAREFULLY TO THE LIFE-SAVING INSTRUCTIONS WE WILL NOW BROADCAST. WE WILL KEEP REPEATING THESE INSTRUCTIONS.

TAKE THE FOLLOWING ACTIONS IMMEDIATELY TO PROTECT YOURSELF IN CASE FALLOUT ARRIVES HERE:

- (1) LOCATE THE BEST FALLOUT PROTECTION AVAILABLE THAT YOU CAN REACH IN 20 TO 30 MINUTES OR LESS.

- (2) IF YOU ARE AT HOME AND YOUR HOUSE HAS A BASEMENT, THE BASEMENT PROVIDES FAIR TO GOOD FALLOUT PROTECTION NOW. TAKE THESE ACTIONS TO MAKE THE PROTECTION BETTER: PUT A WORKBENCH OR LARGE, STURDY TABLE IN THE CORNER OF THE BASEMENT THAT IS FARTHEST BELOW GROUND (AND FARTHEST FROM AN EXPLOSED OUTSIDE WALL OF THE BASEMENT, IF THERE IS ONE). THEN PUT BOXES OR DRESSER DRAWERS FILLED WITH EARTH ON TOP OF THE TABLE AND ON THE TWO EXPOSED SIDES. BRICKS OR OTHER HEAVY MATERIALS CAN ALSO BE USED. ON THE TABLE, PILE AS MUCH HEAVY MATERIALS AS IT WILL HOLD WITHOUT COLLAPSING. AROUND THE TABLE, PLACE AS MUCH SHIELDING MATERIALS AS POSSIBLE.
- (3) IF YOU ARE AT HOME AND YOUR HOUSE DOES NOT HAVE A BASEMENT, YOU HAVE THREE CHOICES. (a) PREPARED TO GO TO A NEARBY LARGE BUILDING THAT HAS A BASEMENT (PREFERABLY ONE MARKED WITH THE YELLOW AND BLACK "FALLOUT SHELTER" SIGN); OR (b) SEE IF YOU HAVE A NEIGHBOR WHOSE HOUSE HAS A BASEMENT WHO IS WILLING TO SHARE HIS BASEMENT WITH YOU AND YOUR FAMILY FOR ONE TO TWO WEEKS; OR (c) PREPARE A FALLOUT SHELTER IN YOUR HOUSE.
- (4) IF YOU DO NOT HAVE A BASEMENT AND YOU DECIDE TO STAY AT HOME, IT IS ESSENTIAL TO PREPARE A FALLOUT SHELTER IN THE MIDDLE OF THE HOUSE. DO THIS BY SELECTING A PLACE IN THE CENTER OF THE HOUSE, AWAY FROM WINDOWS AND DOORS, AND PUTTING A LARGE STURDY TABLE THERE. THEN PUT BOXES OR DRESSER DRAWERS FILLED WITH EARTH (OR OTHER HEAVY RADIATION SHIELDING MATERIALS) ON TOP OF THE TABLE AND ON ALL FOUR SIDES AROUND IT. ON THE TABLE, PILE AS MUCH HEAVY SHIELDING MATERIAL AS IT WILL HOLD WITHOUT COLLAPSING. AROUND THE TABLE, PLACE AS MUCH SHIELDING MATERIALS AS POSSIBLE.
- (5) RAPIDLY GATHER SUPPLIES YOU WILL NEED TO STAY IN SHELTER FOR ONE TO TWO WEEKS. SUPPLIES SHOULD INCLUDE:
 - (a) AS MUCH DRINKABLE LIQUIDS (WATER, FRUIT OR VEGETABLE JUICES) AND READY-TO-EAT FOOD AS YOU CAN CARRY TO THE SHELTER AREA (AT HOME OR ELSEWHERE). WATER IS MORE IMPORTANT THAN FOOD.

- (b) A BATTERY-POWERED RADIO, FLASHLIGHT, EXTRA BATTERIES FOR EACH, AND PAPER AND PENCIL FOR TAKING NOTES ON INFORMATION GIVEN OVER THE RADIO.
 - (c) SPECIAL MEDICINES OR FOOD REQUIRED BY MEMBERS OF YOUR FAMILY-SUCH AS INSULIN, HEART TABLETS, DIABETIC FOOD OR BABY FOOD.
 - (d) A BLANKET FOR EACH FAMILY MEMBER.
 - (e) A METAL CONTAINER WITH A TIGHT-FITTING LID TO USE AS AN EMERGENCY TOILET: PLASTIC BAGS TO LINE THE TOILET CONTAINER: TOILET PAPER: SOAP, WASH CLOTHS AND TOWELS: A PAIL OR BASIN: SANITARY NAPKINS.
- (6) REMEMBER THAT FALLOUT MAY ARRIVE HERE BY (LOCAL TIME). KEEP LISTENING TO THIS STATION FOR INFORMATION ON WHETHER FALLOUT HAS STARTED TO ARRIVE. TAKE ACTIONS FOR FALLOUT PROTECTION WITHOUT DELAY.
- (7) IF FALLOUT DOES ARRIVE HERE, YOU MAY NEED TO STAY IN SHELTER FOR ONE TO TWO WEEKS. LISTEN TO THIS STATION FOR CIVIL DEFENSE INSTRUCTIONS ON WHEN YOU CAN LEAVE SHELTER.

(Note: The public instructions should be pre-positioned with broadcast station(s), also kept at the warning point.)

4. If NAWAS warning is received that a nuclear detonation has occurred, but fallout is NOT expected in the Morgan County area “WITHIN ONE HOUR”:
- a. Continue alerting key officials (not already alerted per IC above.)
 - b. Instruct CPCS-1 EAS station WCOL (AM/FM) by telephone that they are to continue broadcasting the public instructions in 2a above; also, STANDBY FOR FURTHER NOTIFICATIONS.

(Note: Depending on local circumstances-such as how much time is estimated to be needed to contact the Chief Executive, Emergency Management Director, or Radiological Protection Officer – it MAY be considered desirable to assign additional SOP-type duties to the local warning point operators. If so, the following is suggested as a point of departure for local warning point instructions.)

- c. If the NAWAS warning places the nuclear detonation within 500 miles of Morgan County – AND IF the Chief Executive, Emergency Management

Director DOES NOT INSTRUCT OTHERWISE WITHIN 30 MINUTES OF THE TIME OF THE NUCLEAR DETONATION – instruct the CPCS-1 EBS station WCOL (AM/FM) by telephone (614) 221-7811 to broadcast emergency public instructions in 3b above.

(Note: The foregoing instructions for the warning point operator provide a “fail-safe” approach. If the operator is not instructed otherwise within half an hour of the time of the NUDET, instructions will be broadcast to the public to start preparing for fallout protection. Obviously, this will alarm the public; and protection could be unnecessary in areas not threatened by fallout – or in all areas if the NUDET were later determined to be an airburst, with no fallout produced. Against this must be weighed the undesirability of not having instructed the public to start preparing for fallout protection, within half an hour of the burst, if the community did suffer fallout. It should be remembered that in the highly unlikely event that an accidental launch –with a nuclear detonation – ever occurred, it would undoubtedly occur with no warning, and the Chief Executive, Emergency Management Director, or Radiological Officer might be difficult to locate.

5. If a NAWAS message is received that the accidentally launched weapon has impacted WITHOUT causing a nuclear detonation:
 - a. Instruct CPCS-1 EAS Station WCOL (AM/FM) by telephone to broadcast the following immediately, IF THE IMPACT WAS IN THE MORGAN COUNTY AREA:

THE ACCIDENTALLY LAUNCHED MISSILE HAS IMPACTED IN THIS AREA. A NUCLEAR EXPLOSION DID NOT – REPEAT – DID NOT OCCUR. HOWEVER, IT IS POSSIBLE THAT SOME DANGER MAY EXIST FROM MATERIALS INCLUDED IN A NUCLEAR WEAPON. THEREFORE YOU MUST REMAIN UNDER COVER UNTIL FURTHER NOTICE. THIS MAY BE FOR A NUMBER OF HOURS. KEEP LISTENING TO THIS STATION FOR FURTHER CIVIL DEFENSE INSTRUCTIONS.

- b. Instruct CPCS-1 EAS Station WCOL (AM/FM) by telephone to broadcast the following immediately, IF THE IMPACT WAS NOT IN THE MORGAN COUNTY AREA:

WE HAVE BEEN NOTIFIED BY THE NATIONAL WARNING CENTER THAT THE ACCIDENTALLY LAUNCHED MISSILE IMPACTED IN (CITY, STATE) AT (LOCAL TIME). A NUCLEAR EXPLOSION DID NOT-REPEAT-DID NOT OCCUR. YOU NEED NOT TAKE COVER OR TAKE OTHER PROTECTIVE ACTIONS. MORE INFORMATION WILL BE PROVIDED ON REGULAR NEWS BROADCASTS.